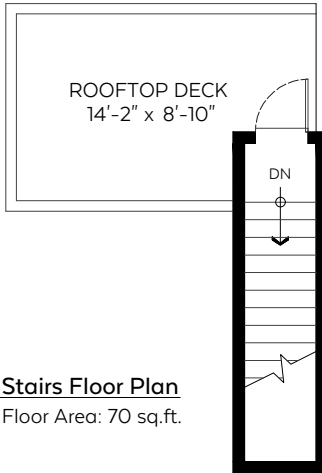


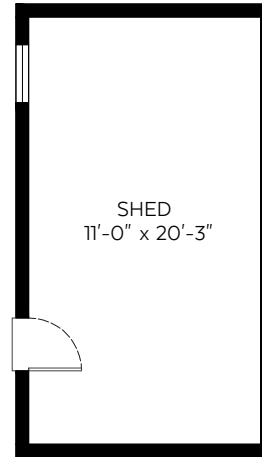
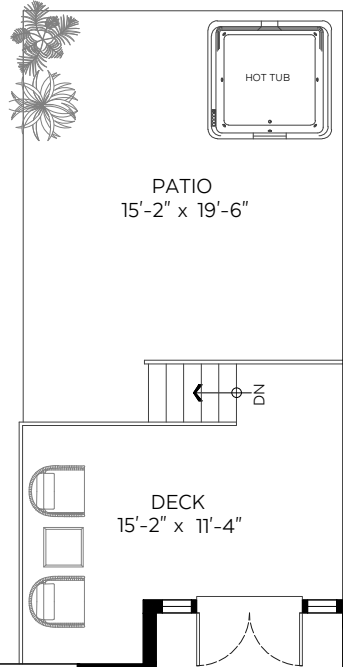
Auxiliary Area

Main Floor:	759 sq.ft.
Upper Floor:	777 sq.ft.
Lower Floor:	759 sq.ft.
Stairs:	70 sq.ft.
Total:	2,295 sq.ft.

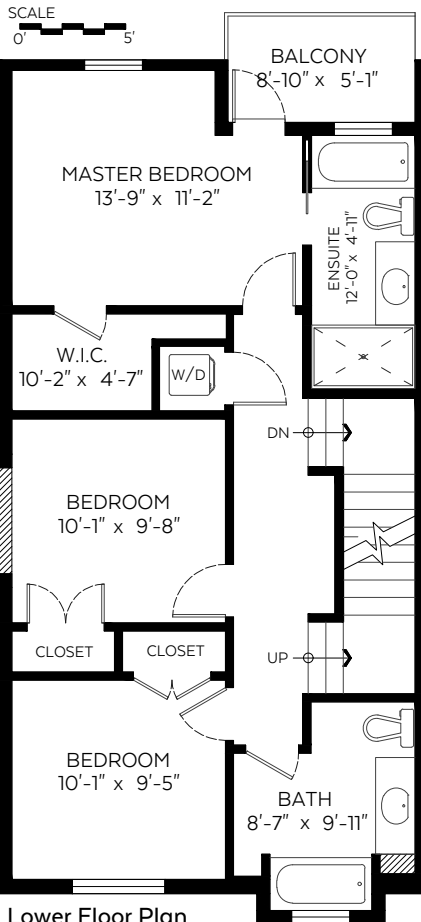
Rooftop Deck:	113 sq.ft.
Balcony:	45 sq.ft.
Deck:	157 sq.ft.
Patio:	268 sq.ft.
Shed:	263 sq.ft.



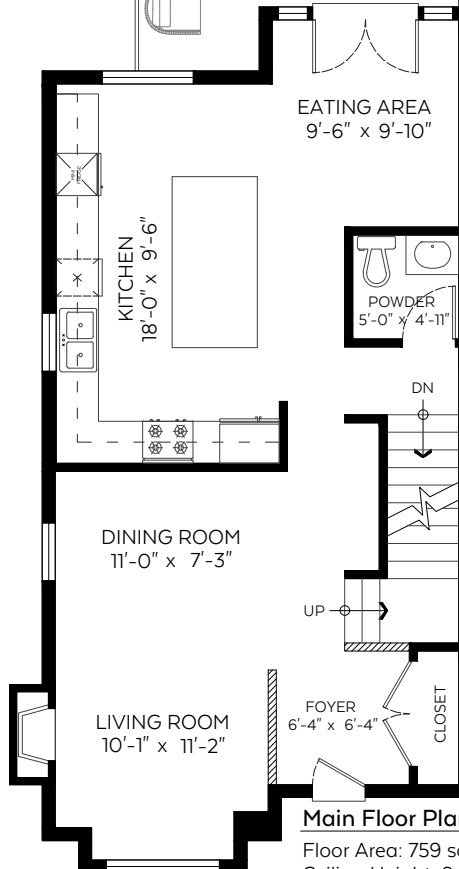
Stairs Floor Plan
Floor Area: 70 sq.ft.



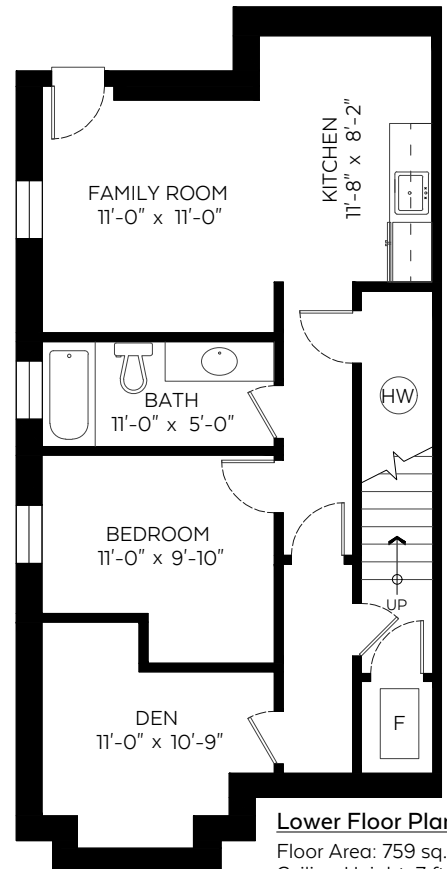
SHED
11'-0" x 20'-3"



Lower Floor Plan
Floor Area: 777 sq.ft.
Ceiling Height: 8 ft.



Main Floor Plan
Floor Area: 759 sq.ft.
Ceiling Height: 9 ft.



Lower Floor Plan
Floor Area: 759 sq.ft.
Ceiling Height: 7 ft.



Valid Until: October 15, 2022

The floor plan is not suitable for architectural/construction and is covered under E&O. © Excelsior Measuring Inc. 2021. All rights reserved for Excelsior Measuring Inc. Users shall not publish and distribute such material (in whole or in part) and/or incorporate it in other works in any form.

