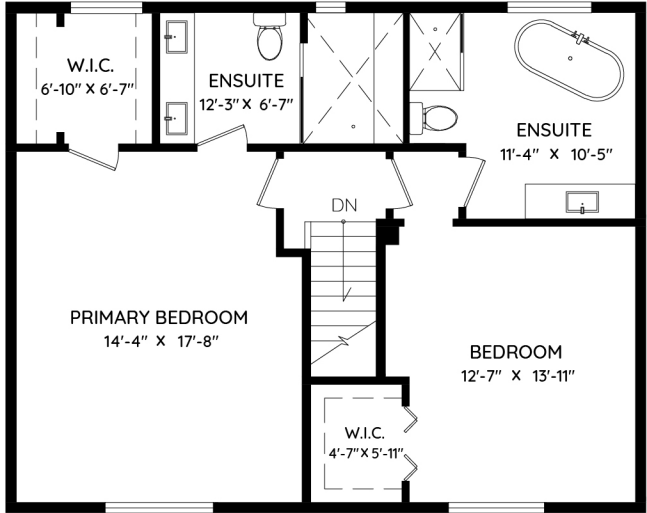
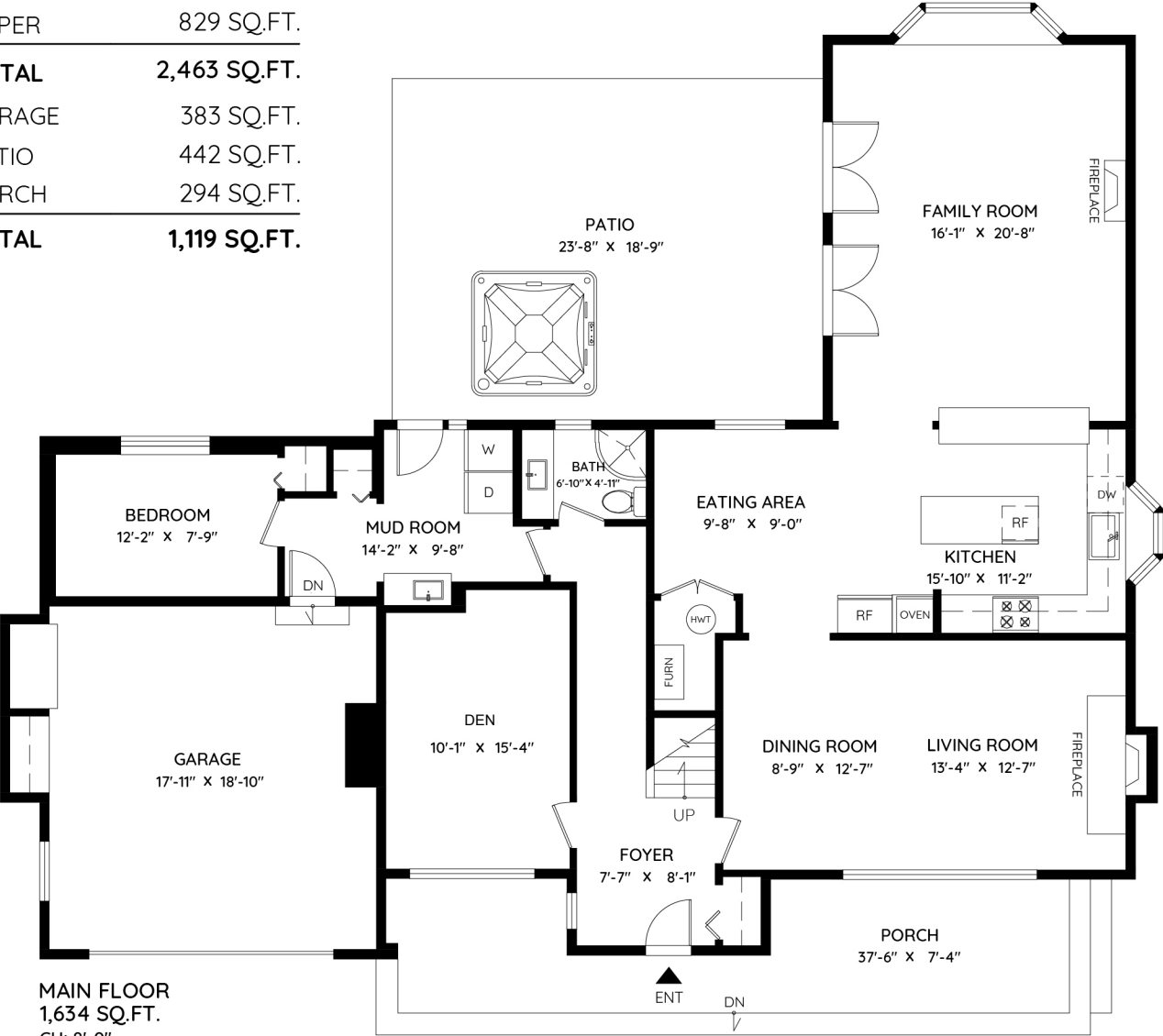


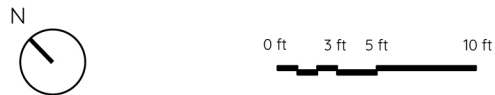
4650 CHERBOURG DRIVE

WEST VANCOUVER, BC

MAIN	1,634 SQ.FT.
UPPER	829 SQ.FT.
TOTAL	2,463 SQ.FT.
GARAGE	383 SQ.FT.
PATIO	442 SQ.FT.
PORCH	294 SQ.FT.
TOTAL	1,119 SQ.FT.



UPPER FLOOR
829 SQ.FT.
CH: 8'-0"



The floor plan and the measurements are approximate within +/- 2% and are to be used for advertising usage only.
May include unfinished area. Not suitable for architectural or construction. E&O Insured