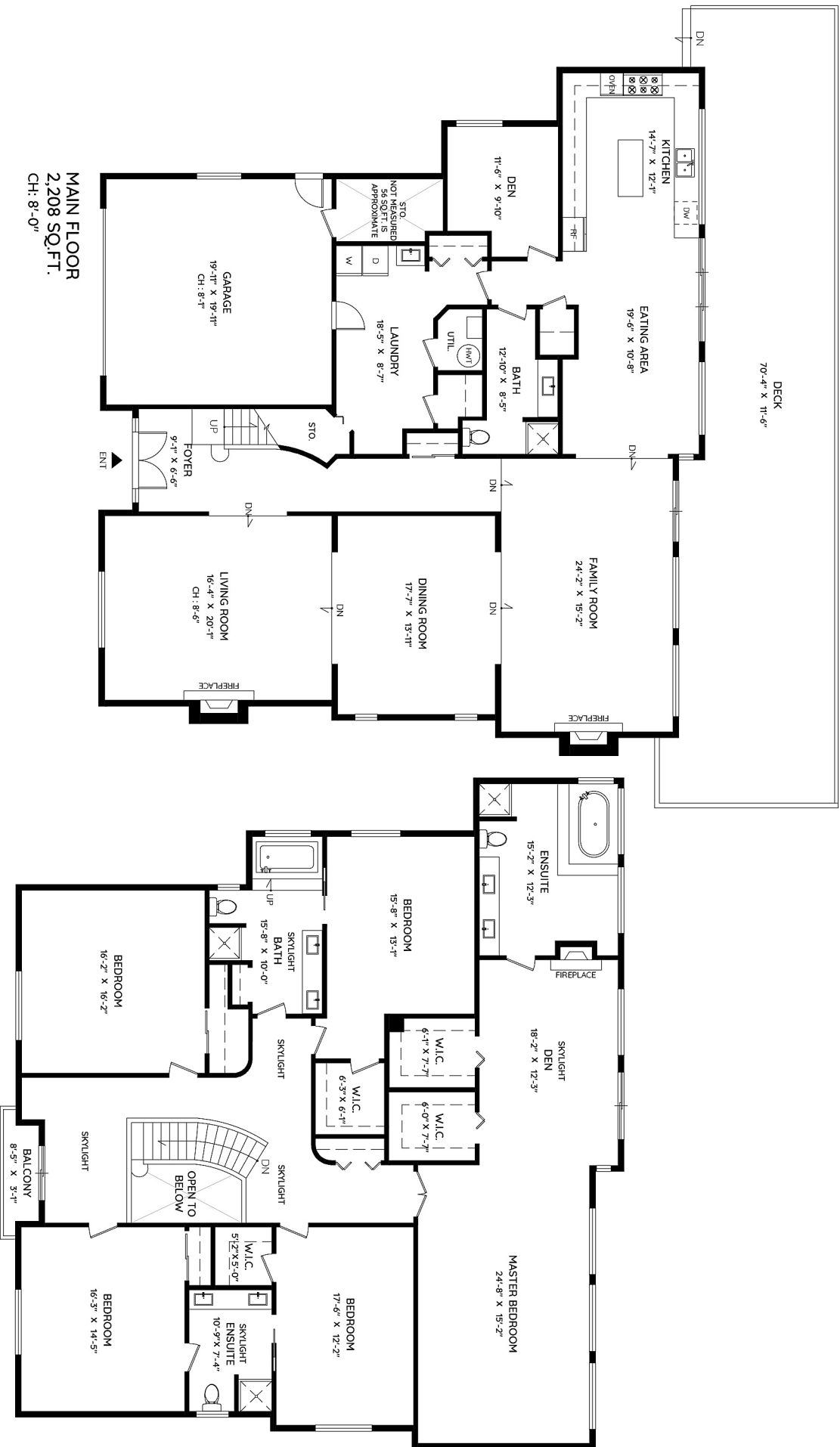
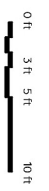


5532 WESTHAVEN ROAD WEST VANCOUVER, BC



MAIN	2,208 SQ.FT.	GARAGE	424 SQ.FT.
UPPER	2,705 SQ.FT.	BALCONY	33 SQ.FT.
TOTAL	4,913 SQ.FT.	DECK	931 SQ.FT.
		TOTAL	1,388 SQ.FT.



The floor plan and the measurements are approximate within +/- 2% and are to be used for advertising usage only. May include unfinished area. Not suitable for architectural or construction. E&O insured.