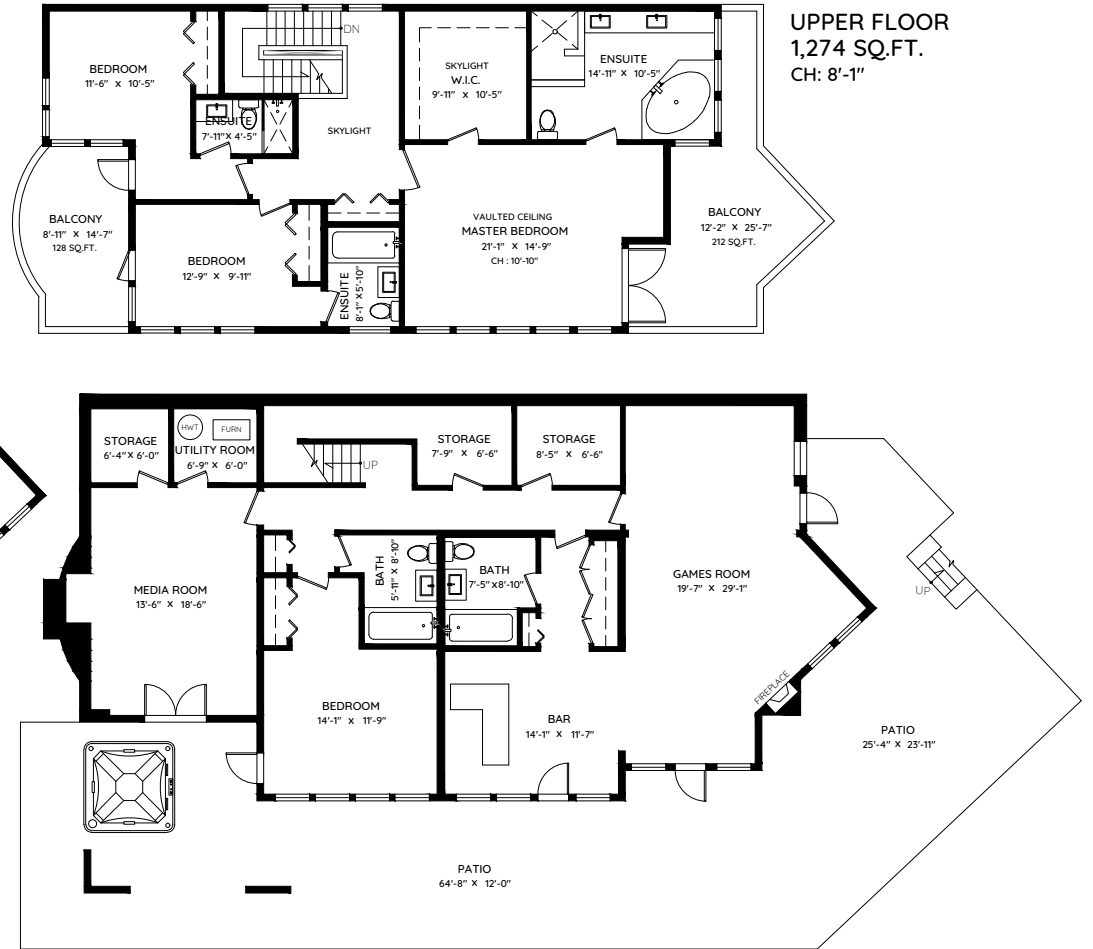
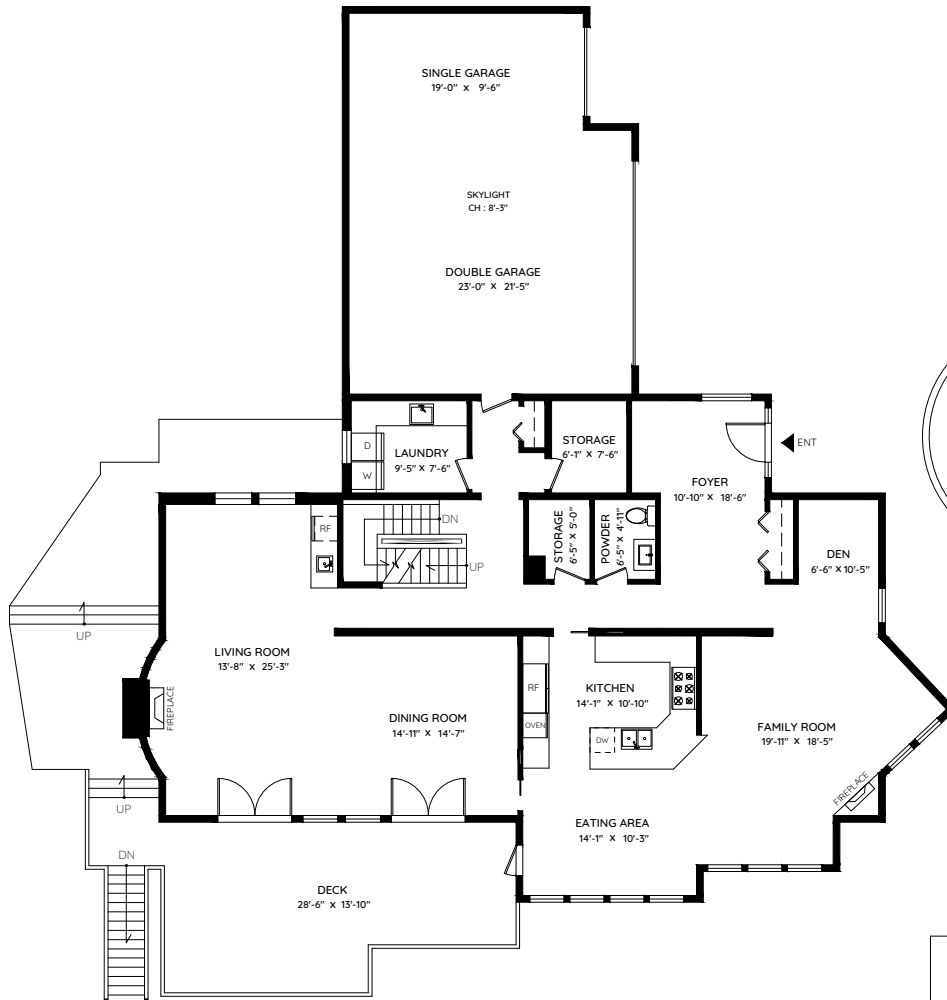


# 5741 SEAVIEW ROAD

WEST VANCOUVER, BC

MAIN	2,042 SQ.FT.	GARAGE	719 SQ.FT.
UPPER	1,274 SQ.FT.	DECK	763 SQ.FT.
LOWER	1,843 SQ.FT.	BALCONY	340 SQ.FT.
<b>TOTAL</b>	<b>5,159 SQ.FT.</b>	<b>PATIO</b>	<b>1436 SQ.FT.</b>
		<b>TOTAL</b>	<b>3,258 SQ.FT.</b>



The floor plan and the measurements are approximate within +/- 2% and are to be used for advertising usage only. May include unfinished area. Not suitable for architectural or construction. E&O Insured

