

# 608 - 258 NELSON'S COURT

NEW WESTMINSTER, BC

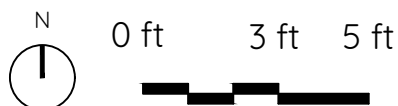
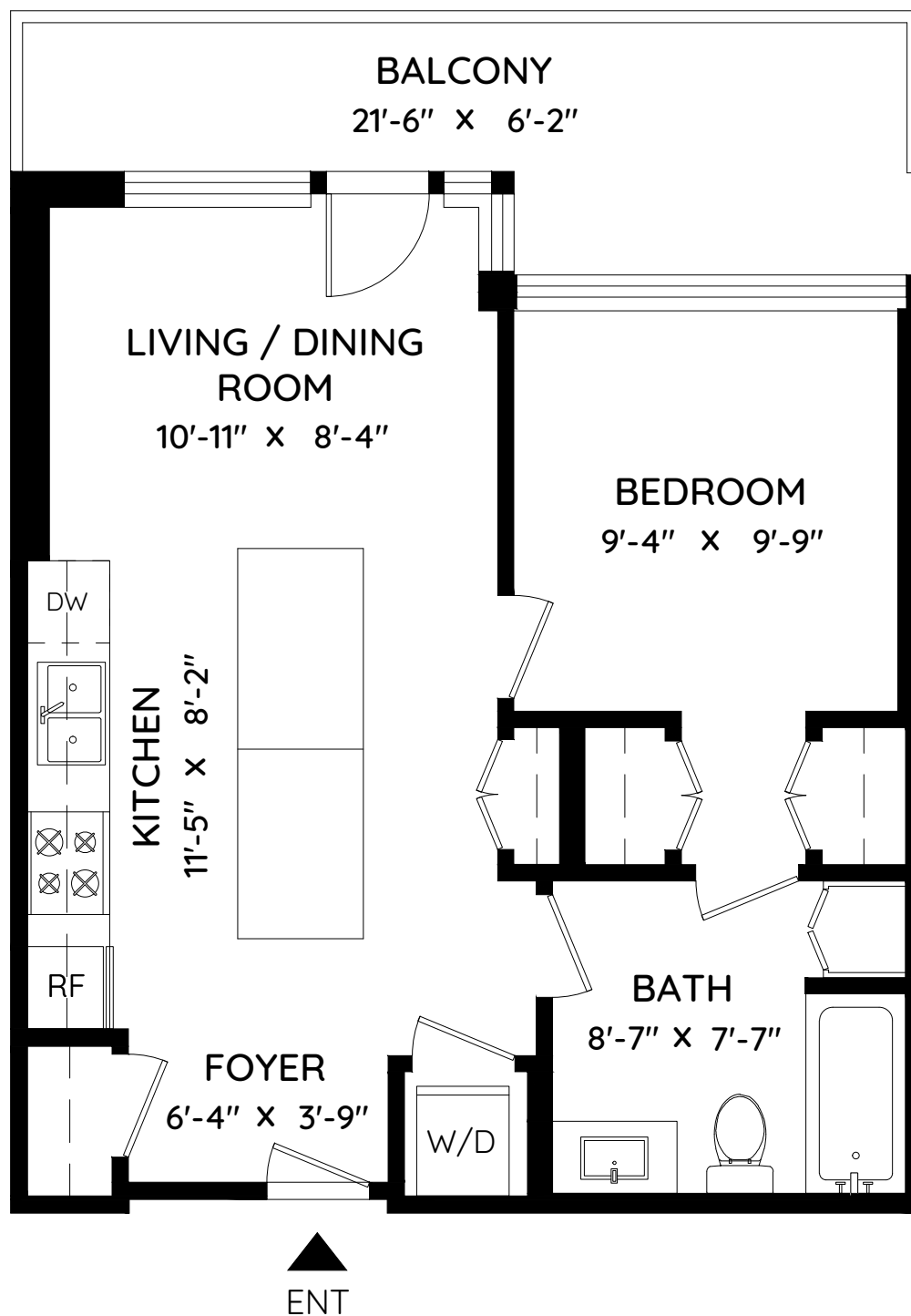
BRG

CHAS WOODYER  
REAL ESTATE PROFESSIONAL

LIVING AREA 539 SQ.FT.

BALCONY 112 SQ.FT.

CEILING HEIGHT 8'-5"



The floor plan and the measurements are approximate within +/- 2% and are to be used for advertising usage only.  
May include unfinished area. Not suitable for architectural or construction. E&O Insured

keyplan  
plan your space