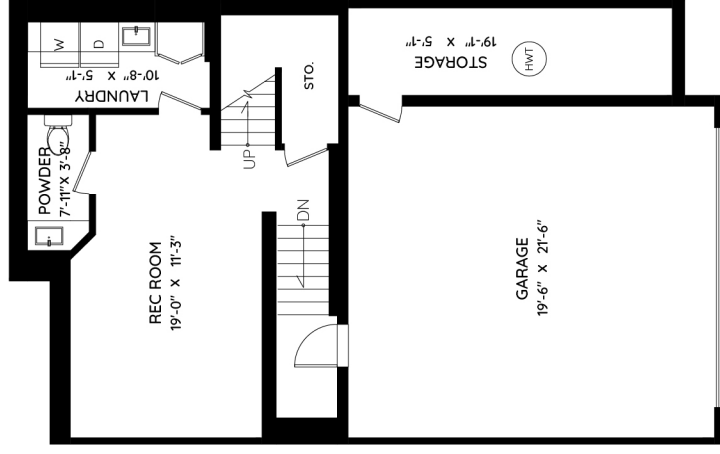
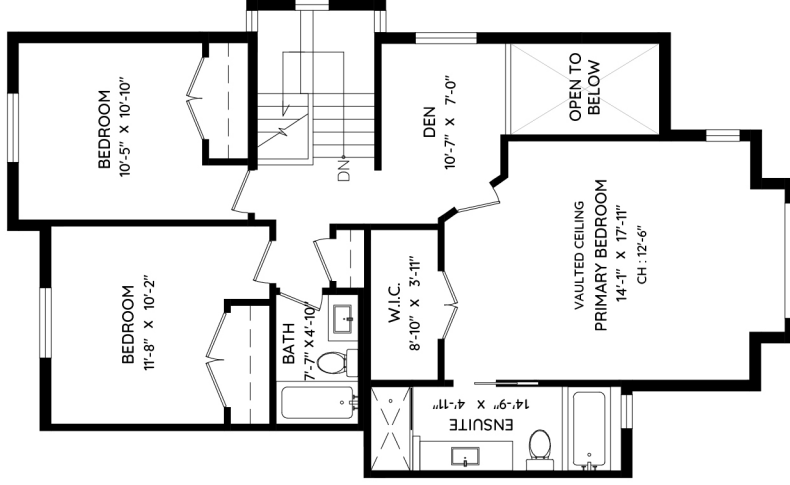
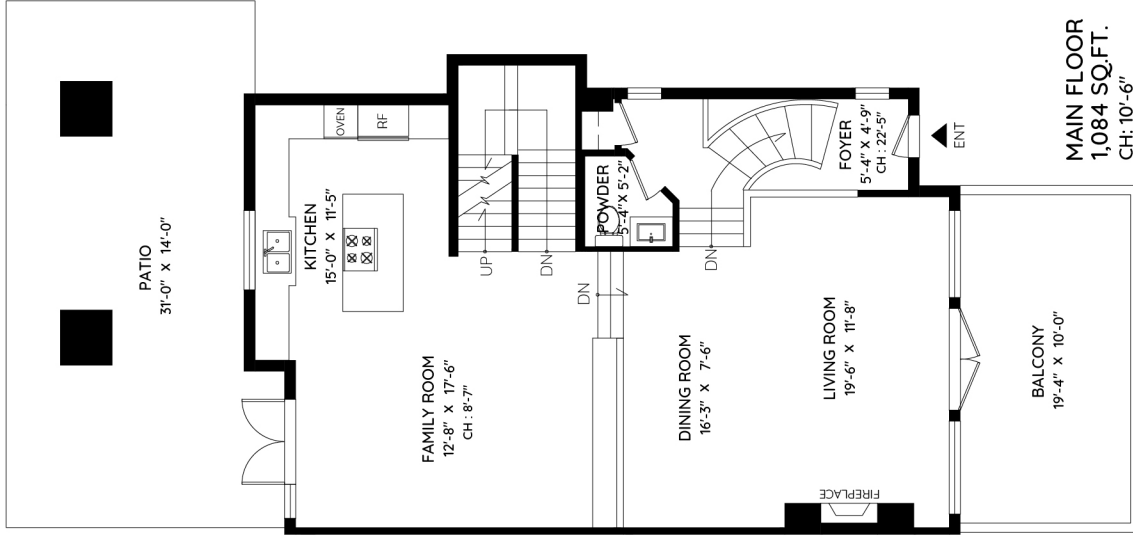
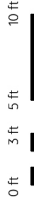
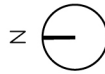


7 - 2555 SKILIFT ROAD WEST VANCOUVER, BC

MAIN	1,084 SQ.FT.	GARAGE	570 SQ.FT.
UPPER	994 SQ.FT.	BALCONY	215 SQ.FT.
LOWER	502 SQ.FT.	PATIO	459 SQ.FT.
TOTAL	2,580 SQ.FT.	TOTAL	1,244 SQ.FT.



Paige
STEWART
REAL ESTATE



The floor plan and measurements are approximate, typically within 1/4, 2%. These are intended strictly for advertising purposes. They may encompass unfinished areas and are not intended for architectural or construction applications. There may be variances in the numbers if there were restrictions on property access or if taking precise measurements at the time of measuring isn't feasible. ESO insured.

