

1921 Parkside Lane

North Vancouver, BC

Tori McDonald

604.880.5232

tori@torimcdonald.ca

torimcdonald.ca

3 BEDROOM + DEN + 1.5 BATHROOM

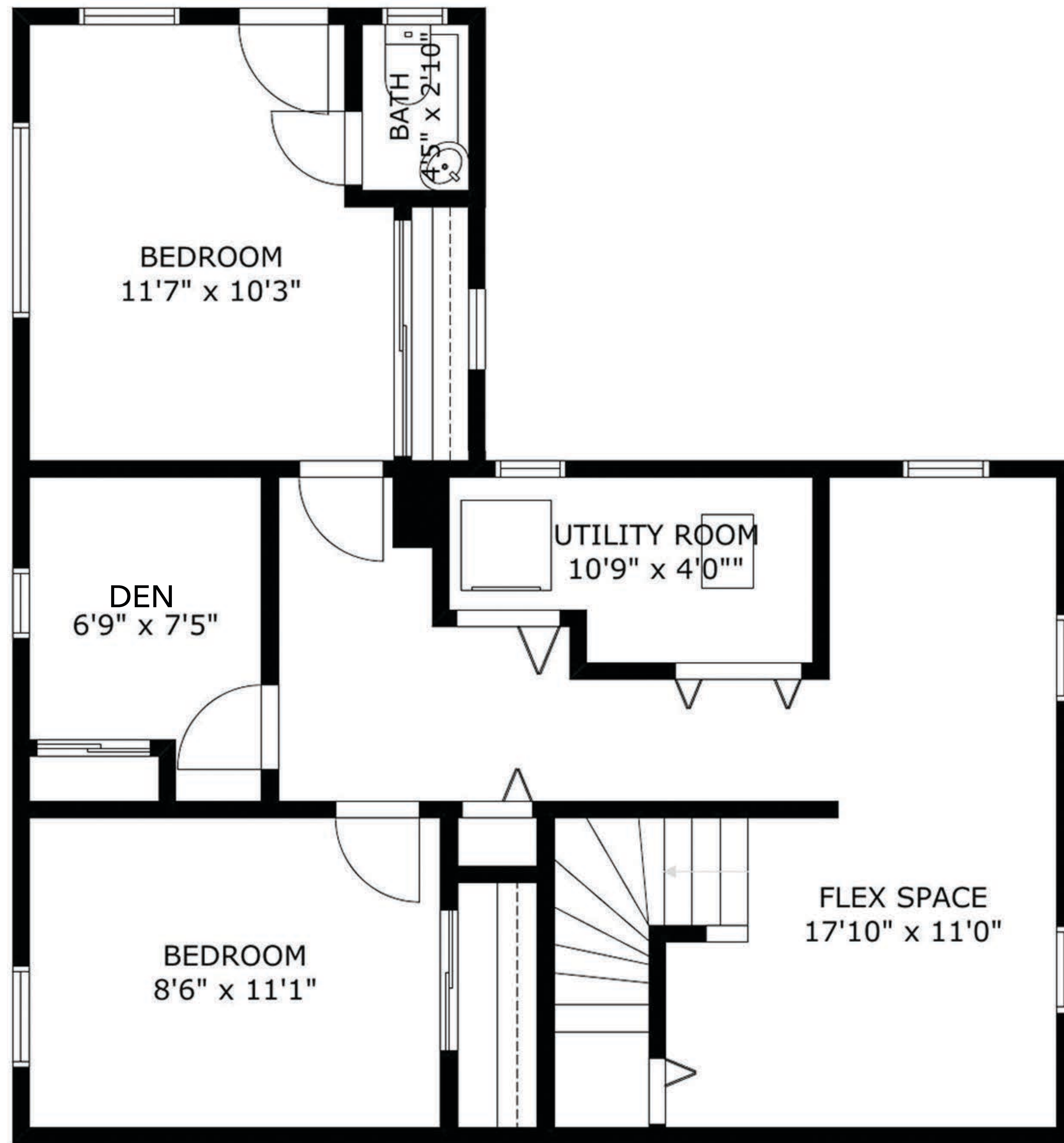
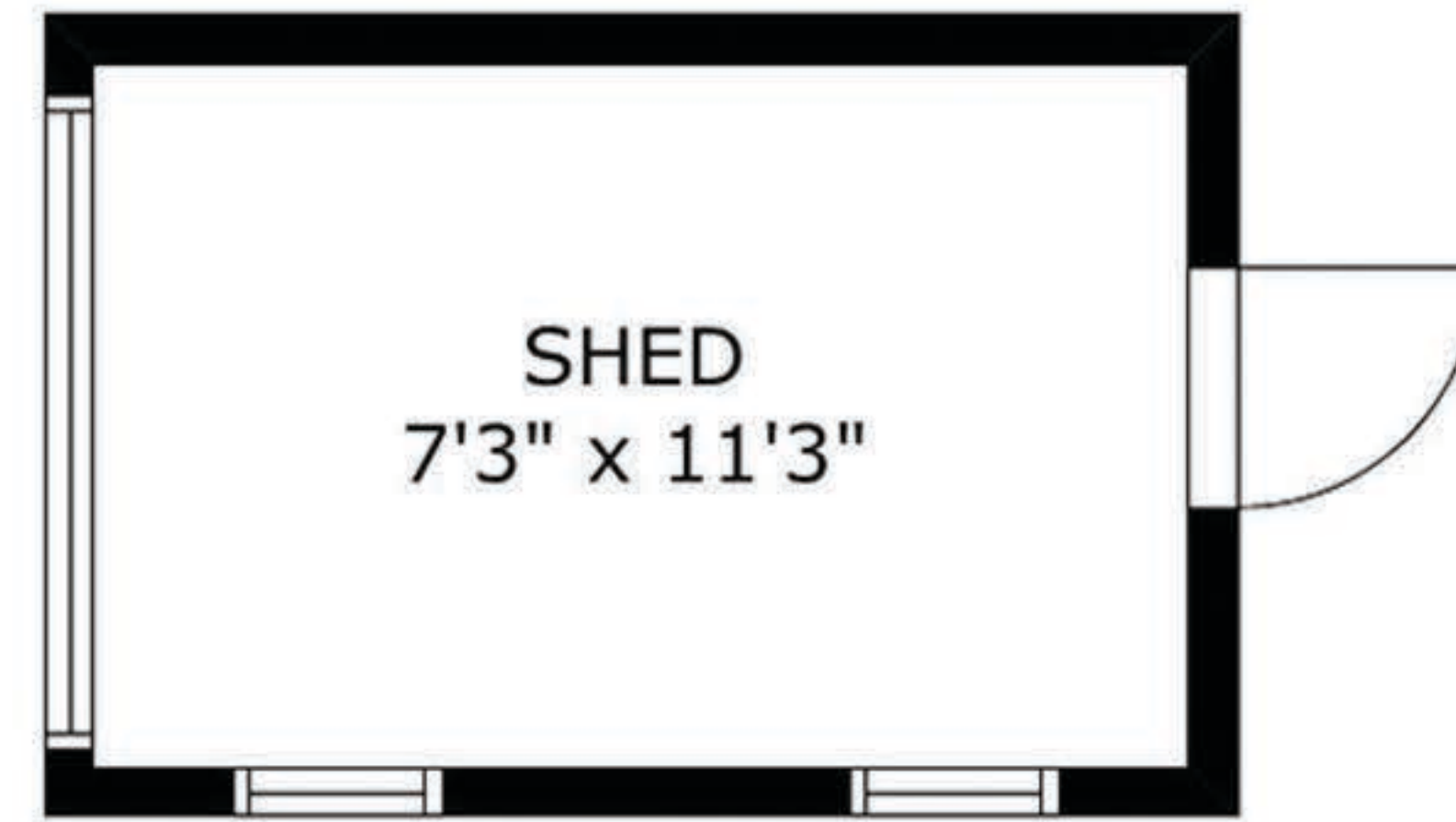
Main Floor: 804 sqft

Lower Floor: 779 sqft

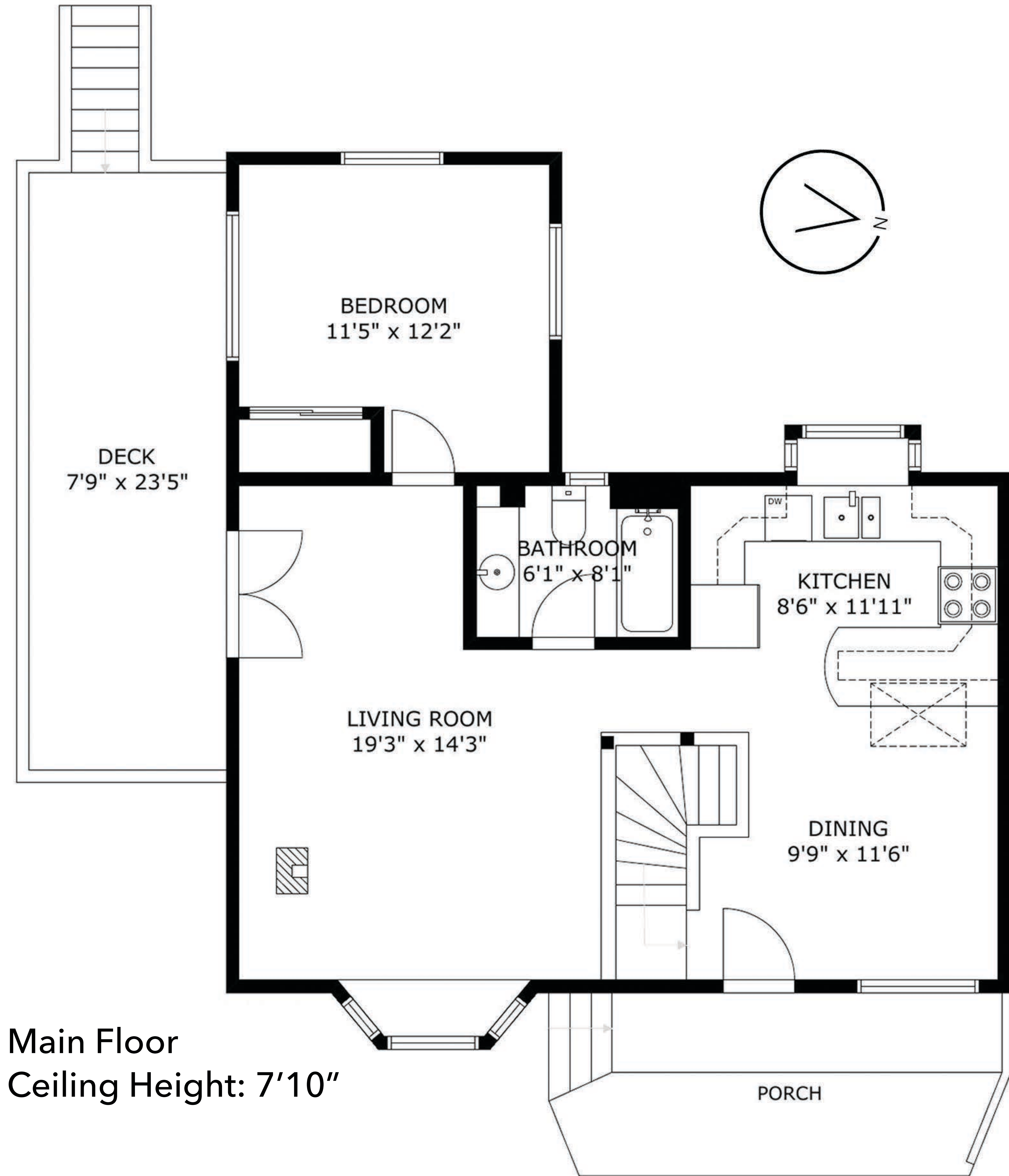
Total Interior: 1583 sqft

Deck: 181 sqft

Shed: 81 sqft



Lower Floor
Ceiling Height: 7'0"



Main Floor
Ceiling Height: 7'10"

