

732 HANDSWORTH ROAD

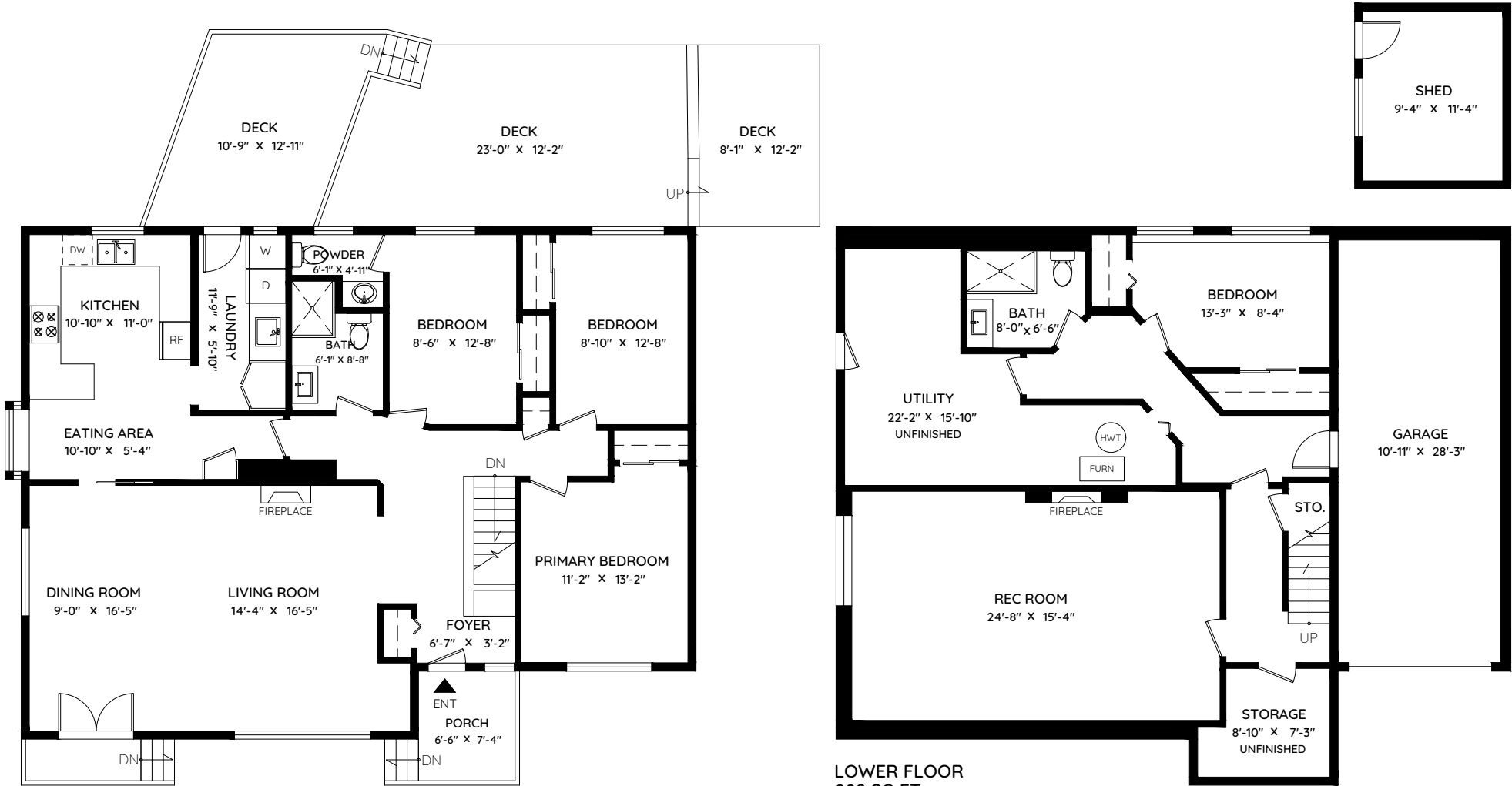
NORTH VANCOUVER, BC

MAIN	1,464 SQ.FT.	GARAGE	343 SQ.FT.
LOWER	882 SQ.FT.	DECK	541 SQ.FT.
TOTAL	2,346 SQ.FT.	PORCH	58 SQ.FT.
UNFINISHED	300 SQ.FT.	SHED	130 SQ.FT.
TOTAL AREA	2,646 SQ.FT.	TOTAL	1,072 SQ.FT.



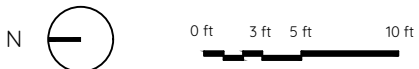
Robert Alexander

604 880 8089
robert@teamalexander.com



MAIN FLOOR
1,464 SQ.FT.
CH: 8'-0"

LOWER FLOOR
882 SQ.FT.
CH: 7'-4"



The floor plan and measurements are approximate, typically within +/- 2%. These are intended strictly for advertising purposes. They may encompass unfinished areas and are not intended for architectural or construction applications. There may be variances in the numbers if there were restrictions on property access or if taking precise measurements at the time of measuring isn't feasible. E&O insured.

