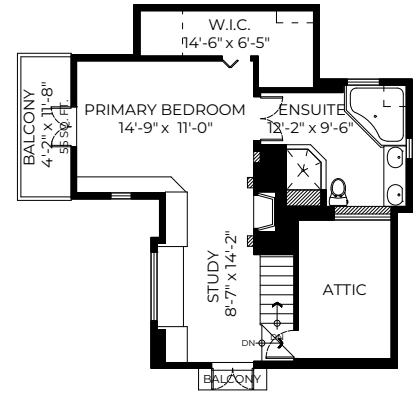


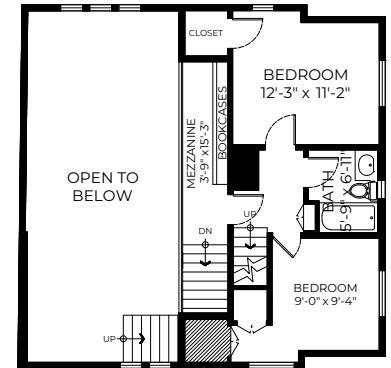
# 6155 Gleneagles Drive, West Vancouver, BC

Attic: 102 SQ. FT.  
 Balcony: 55 SQ. FT.  
 Balcony: 10 SQ. FT.  
 Rear Patio: 613 SQ. FT.  
 Patio: 318 SQ. FT.  
 Front Patio: 614 SQ. FT.  
 Pool: 685 SQ. FT.  
 Garage: 444 SQ. FT.  
 Pool Plant: 52 SQ. FT.

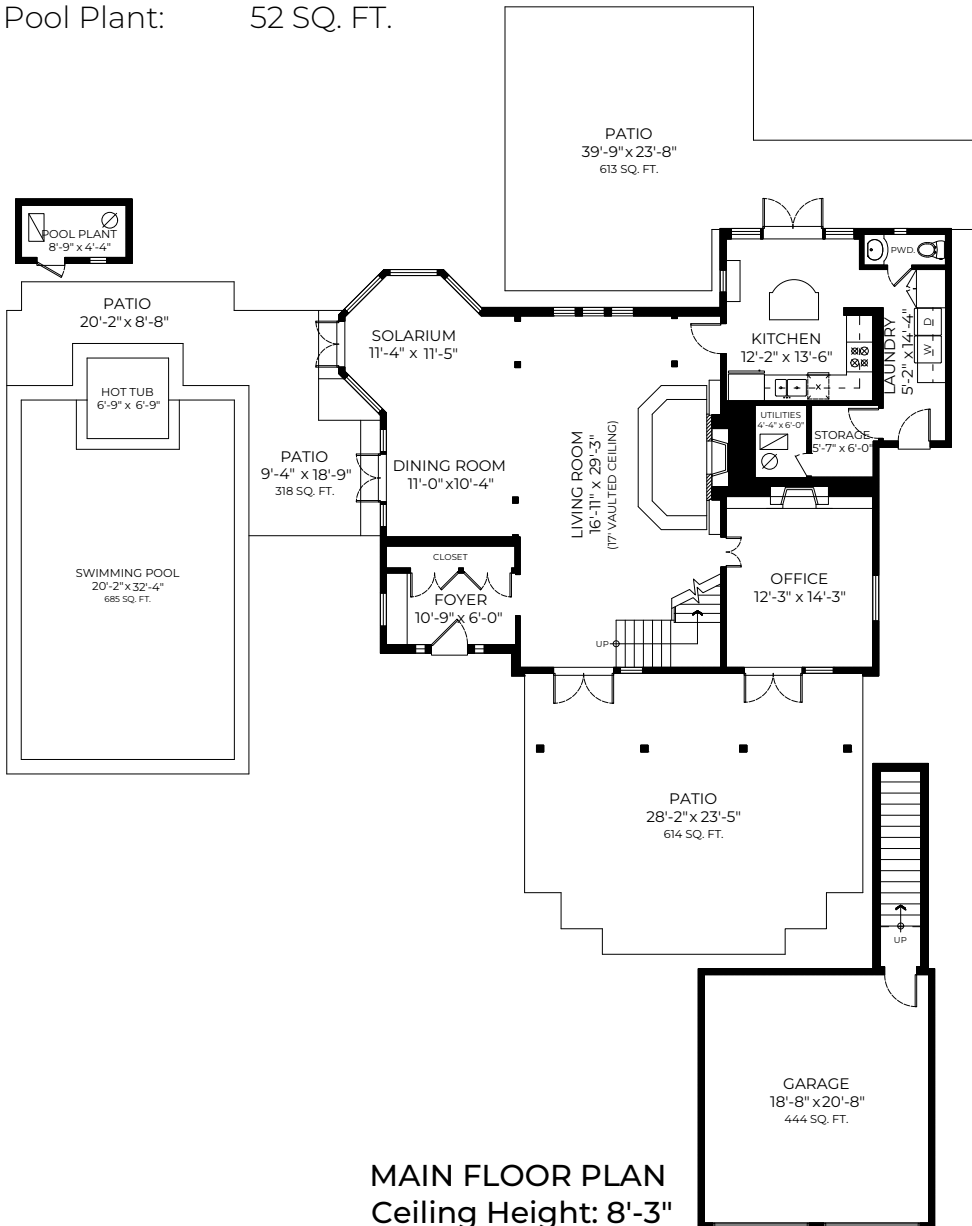
Top Floor: 577 SQ. FT.  
 Upper Floor: 528 SQ. FT.  
 Main Floor: 1496 SQ. FT.  
**Total: 2601 SQ. FT.**



**TOP FLOOR PLAN**  
 Vaulted Ceiling  
 Height: 9'-11"



**UPPER FLOOR PLAN**  
 Ceiling Height: 7'-10"



**MAIN FLOOR PLAN**  
 Ceiling Height: 8'-3"



ALP Studio

MEASUREMENTS ARE APPROXIMATE AND MAY NOT BE TO SCALE. E&O INSURED.  
 THE FLOOR PLAN ILLUSTRATION IS NOT SUITABLE FOR CONSTRUCTION/ARCHITECTURAL PURPOSES.