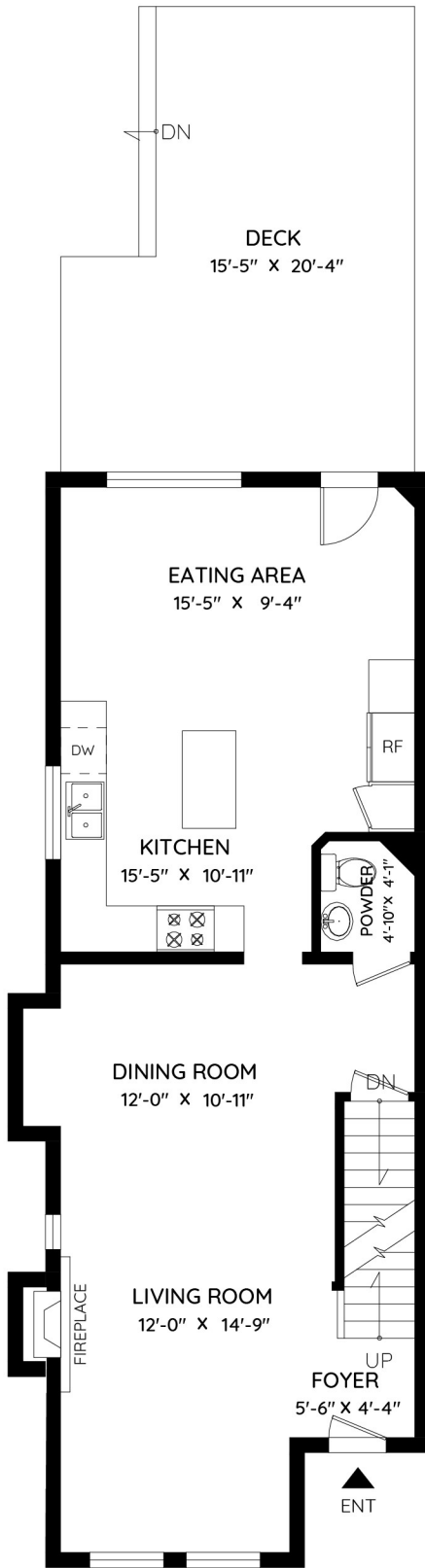


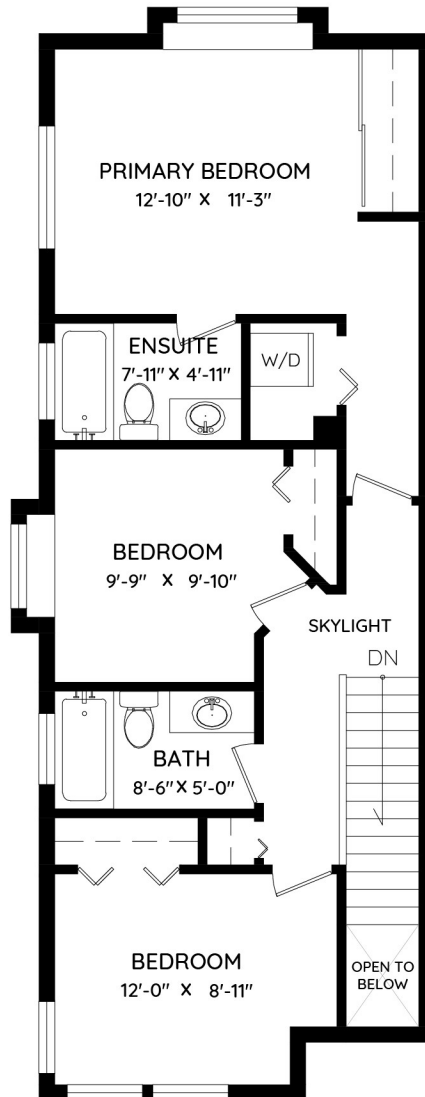
# 6341 DOUGLAS STREET

## WEST VANCOUVER, BC

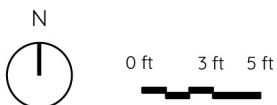
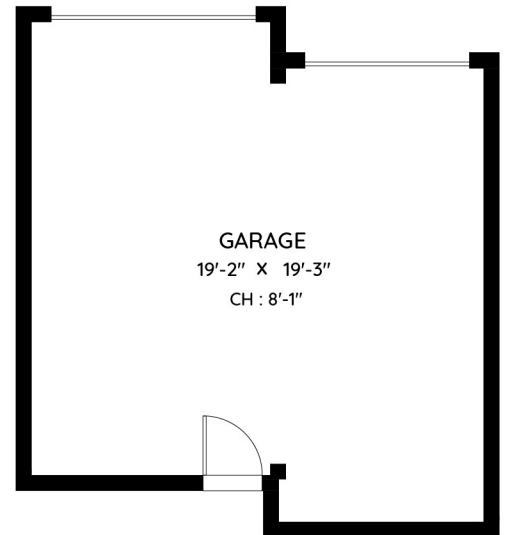
MAIN	785 SQ.FT.	GARAGE	423 SQ.FT.
UPPER	727 SQ.FT.	DECK	277 SQ.FT.
<b>TOTAL</b>	<b>1,512 SQ.FT.</b>	<b>TOTAL</b>	<b>700 SQ.FT.</b>



**MAIN FLOOR**  
785 SQ.FT.  
CH: 8'-0"



**UPPER FLOOR**  
727 SQ.FT.  
CH: 8'-0"



The floor plan and measurements are approximate, typically within +/- 2%. These are intended strictly for advertising purposes. They may encompass unfinished areas and are not intended for architectural or construction applications. There may be variances in the numbers if there were restrictions on property access or if taking precise measurements at the time of measuring isn't feasible. E&O insured.