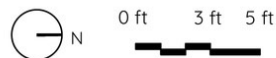
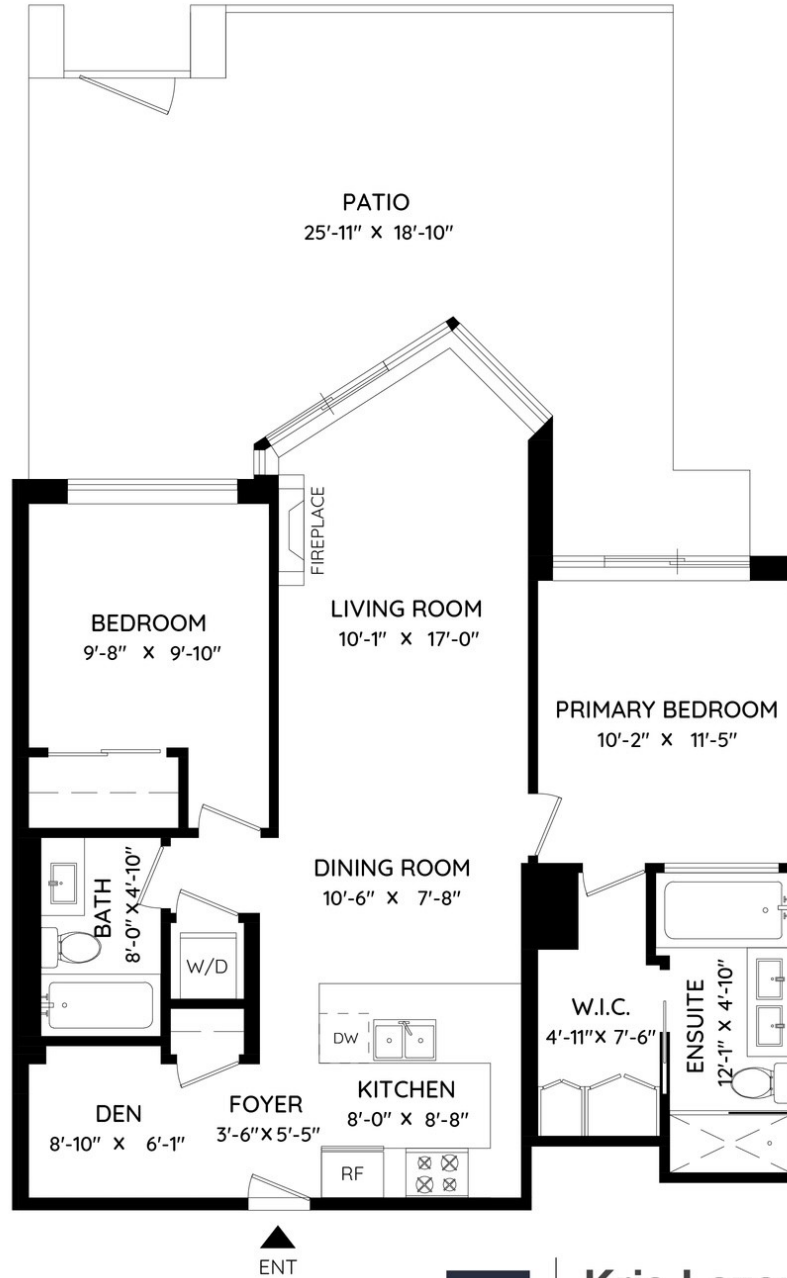


104 - 199 VICTORY SHIP WAY  
NORTH VANCOUVER, BC

LIVING AREA	939 SQ.FT.
PATIO	448 SQ.FT.
CEILING HEIGHT	13'-9"



The floor plan and measurements are approximate, typically within +/- 2%. These are intended strictly for advertising purposes. They may encompass unfinished areas and are not intended for architectural or construction applications. There may be variances in the numbers if there were restrictions on property access or if taking precise measurements at the time of measuring isn't feasible. EGO insured.



**Kris Lazaruk PREC\***  
778 960 5572  
kris@krislazaruk.com

