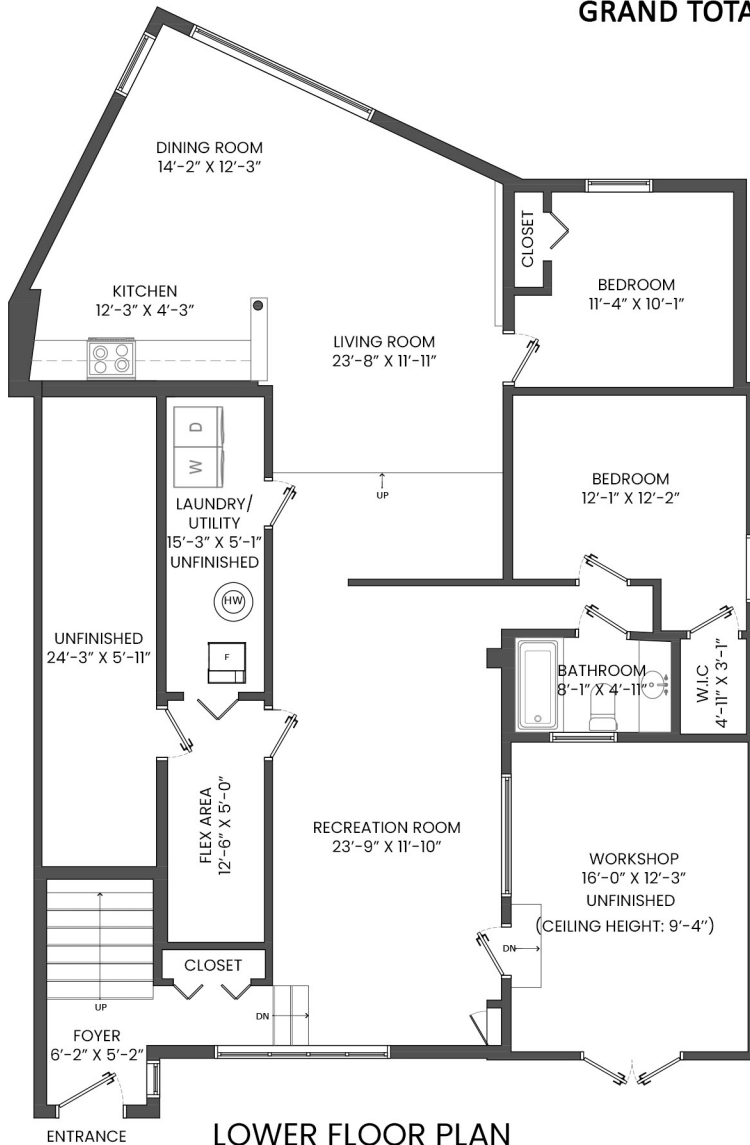
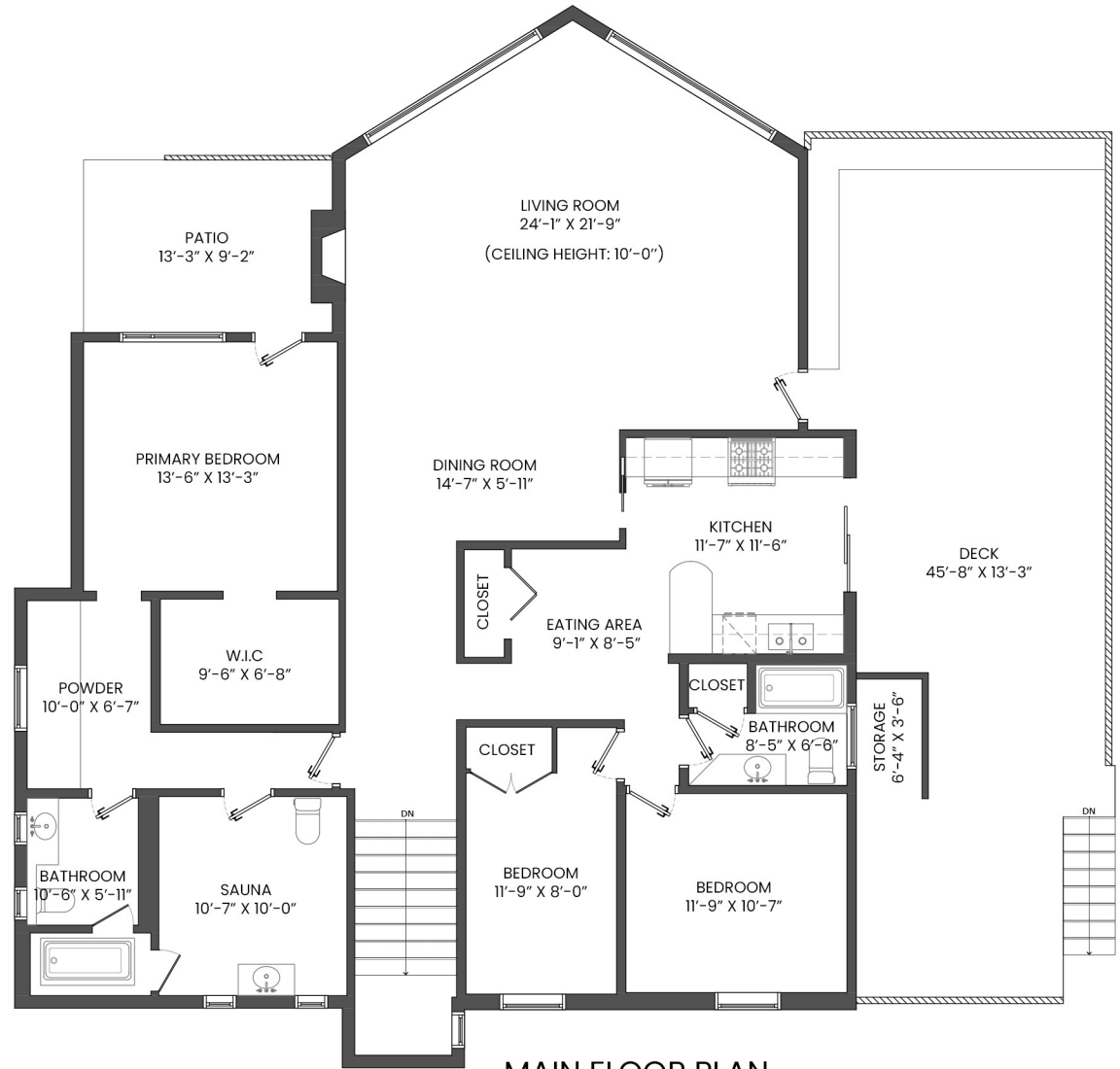


# 6295 STREET GEORGES AVENUE, WEST VANCOUVER, BC

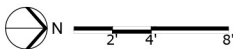
LOWER FLOOR TOTAL: 1,365 SQ.FT. DECK: 599 SQ. FT.  
 MAIN FLOOR TOTAL: 1,916 SQ.FT. PATIO: 115 SQ. FT.  
**TOTAL: 3,281 SQ.FT. STORAGE: 25 SQ. FT.**  
 UNFINISHED: 453 SQ.FT.  
**GRAND TOTAL: 3,734 SQ.FT.**



**LOWER FLOOR PLAN**  
Ceiling Height: 8'-0"



**MAIN FLOOR PLAN**  
Ceiling Height: 8'-0"



\* PERSONAL REAL ESTATE CORPORATION. THE FLOOR PLAN ILLUSTRATION IS NOT SUITABLE FOR CONSTRUCTION/ ARCHITECTURAL PURPOSES. MEASUREMENTS ARE APPROXIMATE AND MAY NOT BE TO SCALE. E&O INSURED.  
FLOOR PLAN DESIGNED BY ISHOT.CA ENTERPRISES INC. 604-368-7979 ISHOT.CA

