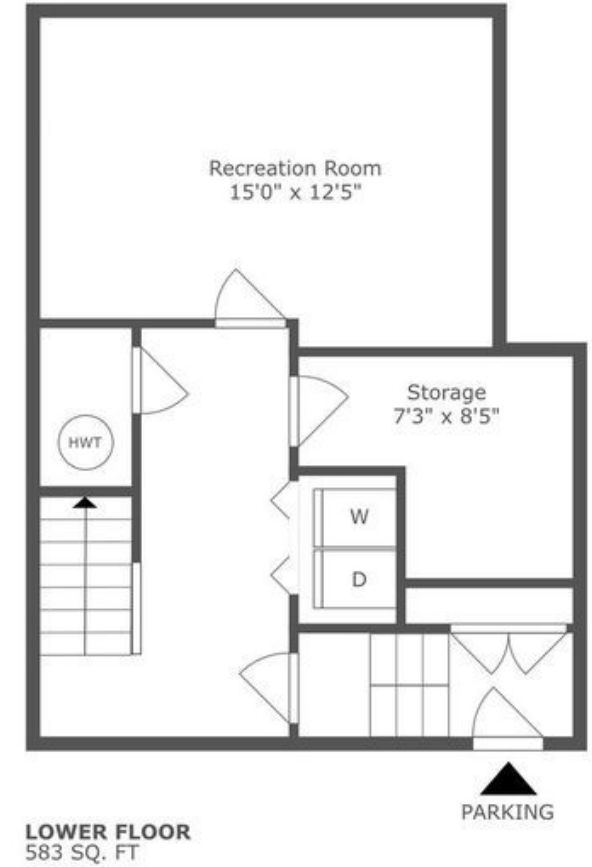
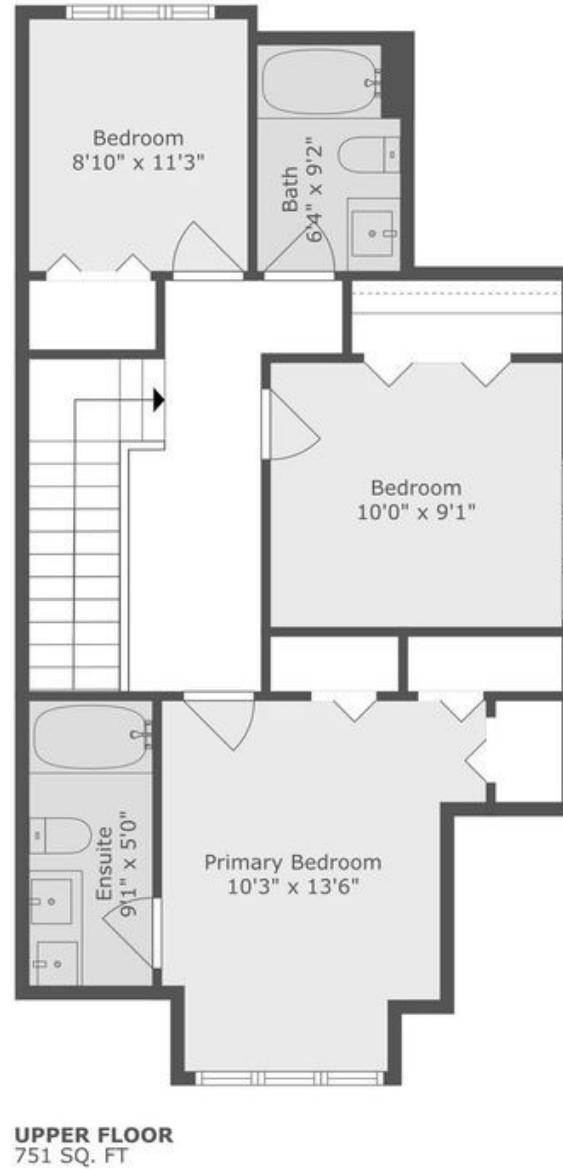
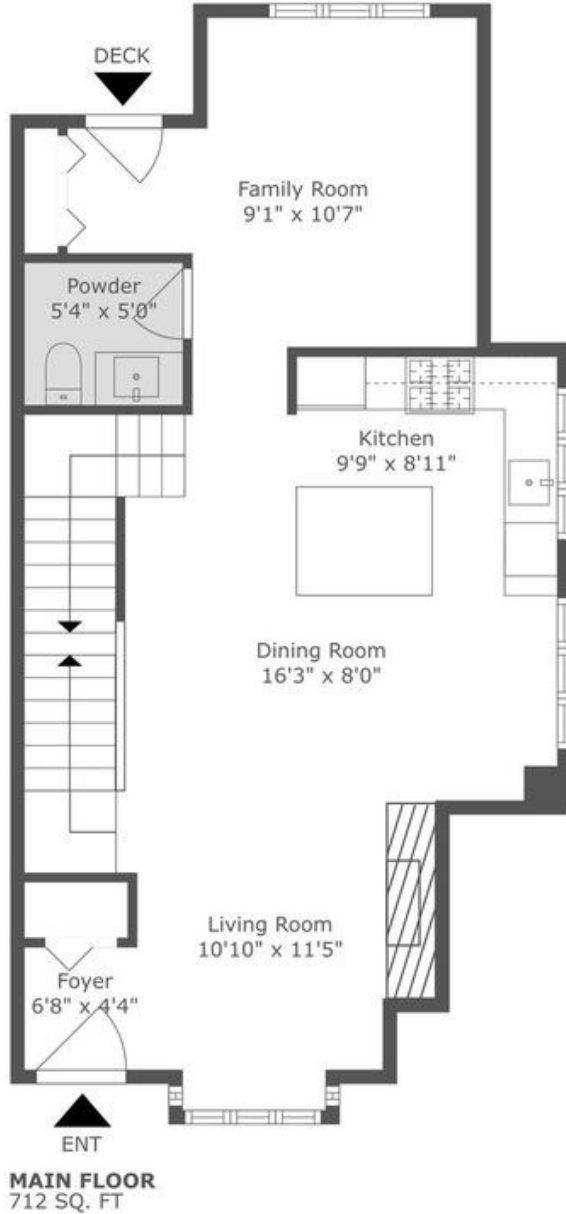




3320 MOUNT SEYMOUR PARKWAY
North Vancouver, BC



TOTAL: 2,046 sq. ft

MAIN: 712 sq. ft, UPPER: 751 sq. ft, LOWER: 583 sq. ft

W&N
Real Estate Media

BELLEVUE
Realty Group®

Floor Plan Created By Cubicasa App. Measurements Deemed Highly Reliable But Not Guaranteed.

JEANNE