

6577 MARINE DRIVE

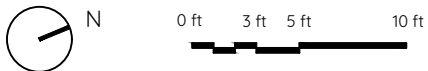
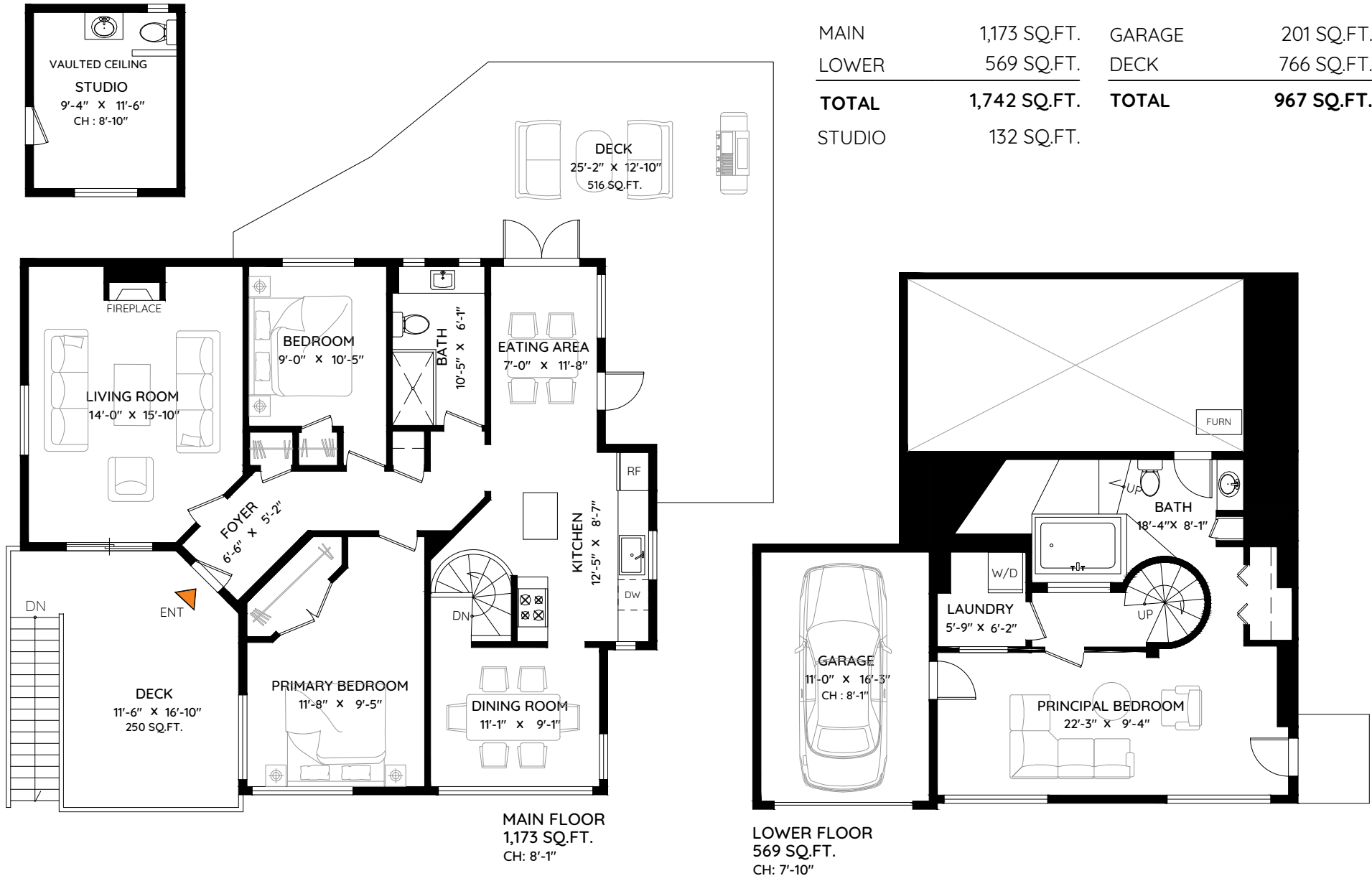
WEST VANCOUVER, BC

BRG

Robert Alexander

604 880 8089
 robert@teamalexander.com

MAIN	1,173 SQ.FT.	GARAGE	201 SQ.FT.
LOWER	569 SQ.FT.	DECK	766 SQ.FT.
TOTAL	1,742 SQ.FT.	TOTAL	967 SQ.FT.
STUDIO	132 SQ.FT.		



The floor plan and measurements are approximate, typically within +/- 2%. These are intended strictly for advertising purposes. They may encompass unfinished areas and are not intended for architectural or construction applications. There may be variances in the numbers if there were restrictions on property access or if taking precise measurements at the time of measuring isn't feasible. E&O insured.