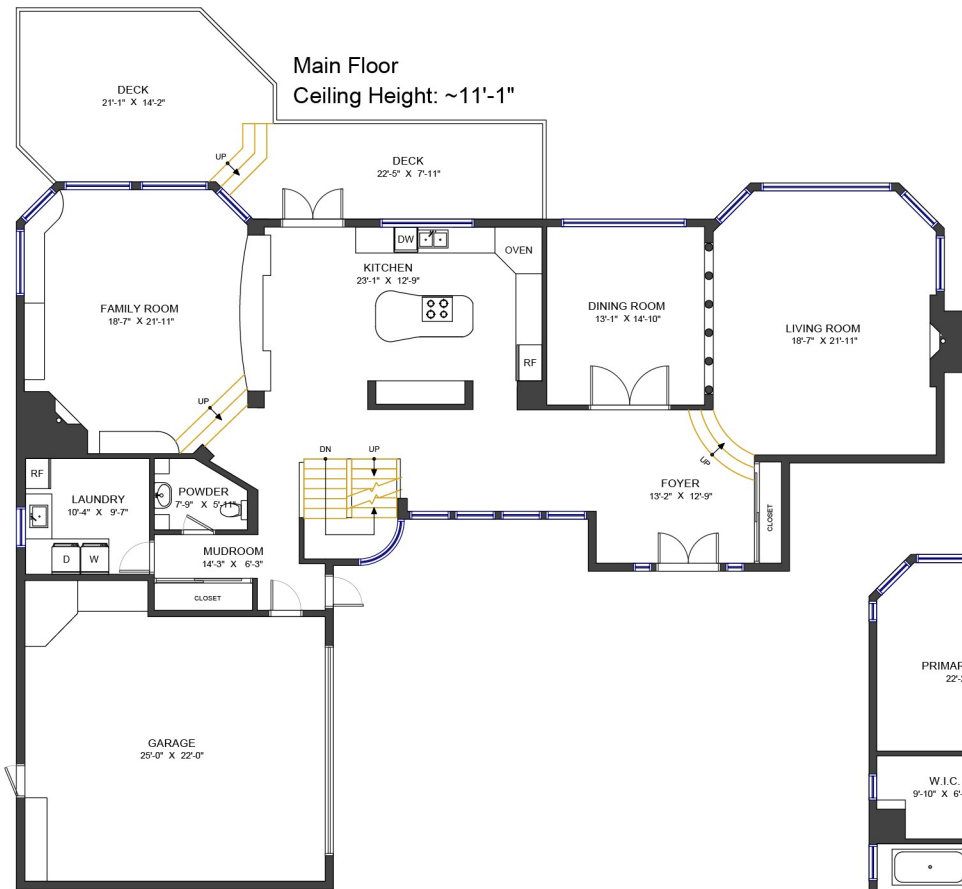
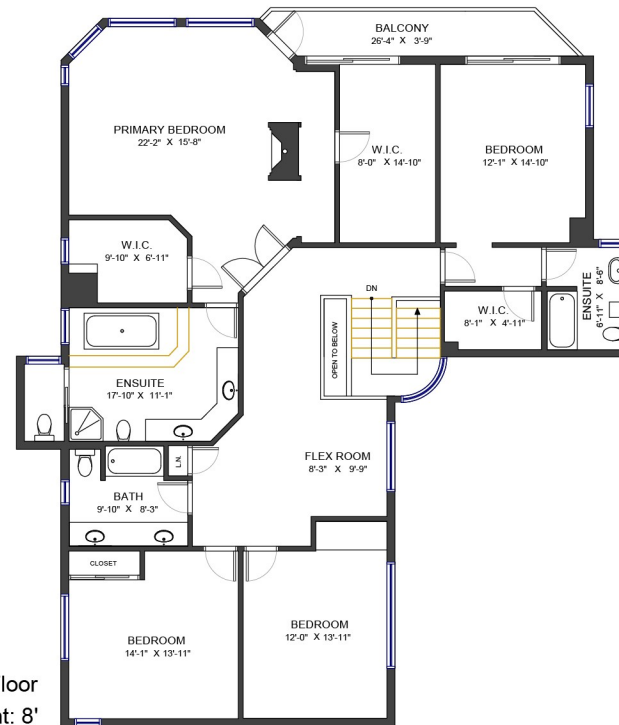


# 1114 Millstream Road West Vancouver, BC

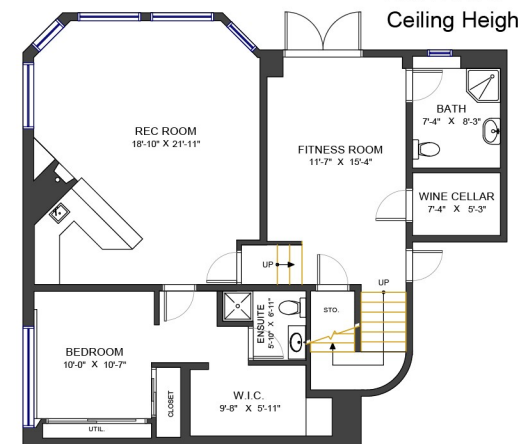


LIVING AREA	5,537 SF	AUXILIARY AREA	1,210 SF
MAIN FLOOR	2,235 SF	BALCONY	95 SF
UPPER FLOOR	2,076 SF	DECK	485 SF
LOWER FLOOR	1,226 SF	GARAGE	630 SF

Upper Floor  
Ceiling Height: 8'



Lower Floor  
Ceiling Height: 8'



Valid Until: March 31, 2027



All dimensions are approximate and not suitable for architectural/construction use.  
This is for marketing purposes only. The measurements are approximate within +/- 2%, E&O insured.  
Total square footage might be kept consistent with strata plan. It might include unfinished area.  
We have no guarantee or warranty of the degree of room titles. Area is calculated per ANSI Z765-2003 method.