

1485 Chartwell Drive Offered at \$5,980,000

Perched at the top of prestigious Chartwell on an incredible 18,131 sq. ft. property is this architecturally significant home designed by E.G. Poskitt & Associates. You will be blown away by the spectacular 200+ degree views from all principal rooms. From the moment you enter the double gated driveway you will appreciate the design of this custom built 2 level, 5,726 sq. ft. home with 4 bedrooms and 5 bathrooms. Other features include high ceilings, outdoor pool, sauna, party room and too much more to list. The primary suite is stunning, also with panoramic views. An iconic home on a meticulously landscaped property.

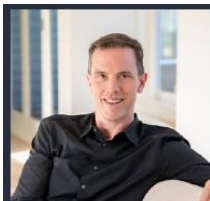
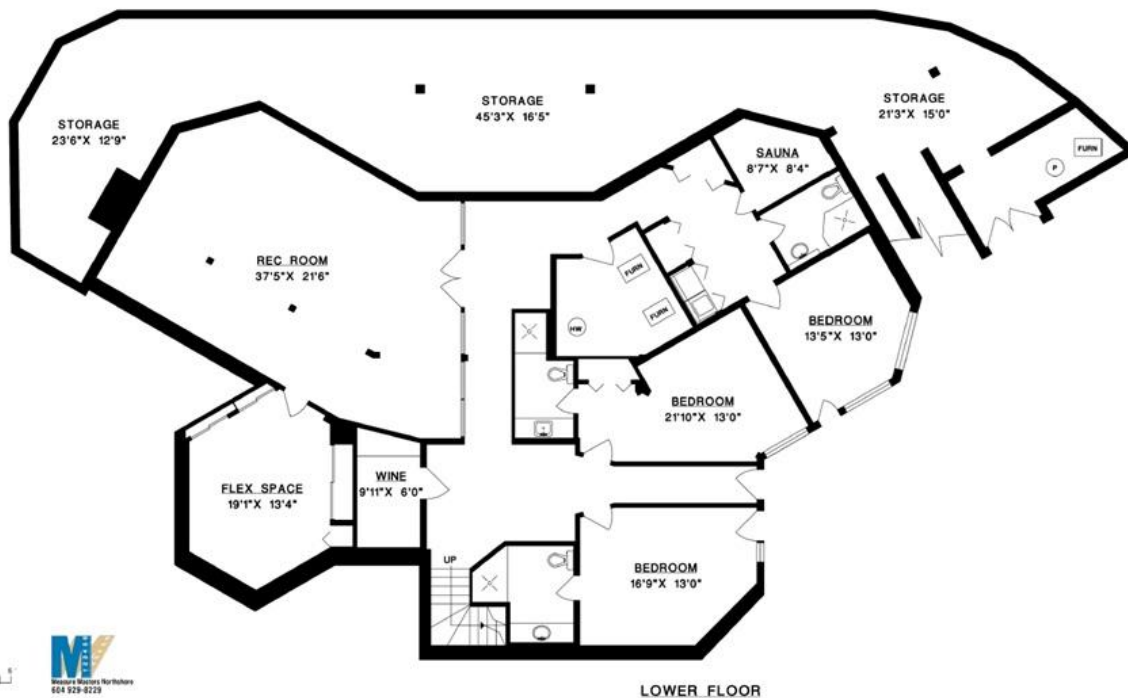
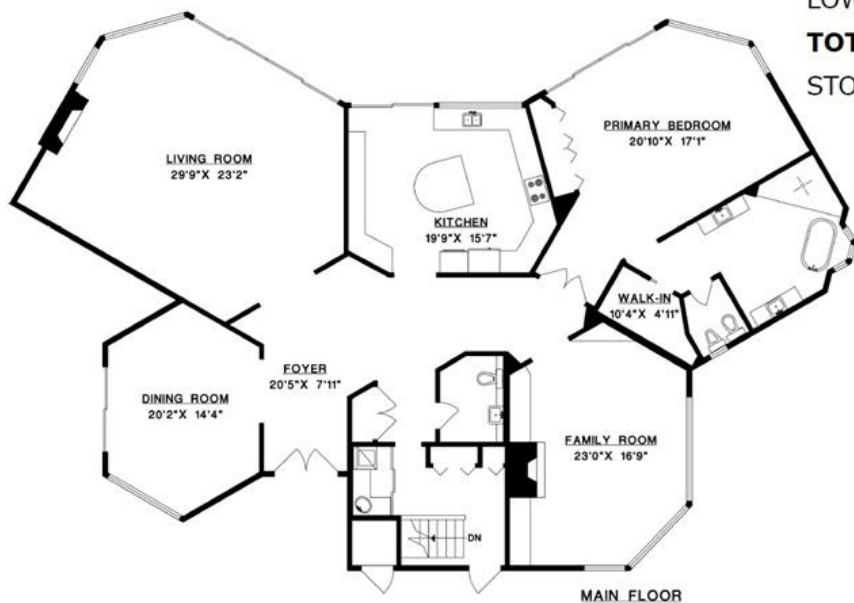


ERIC CHRISTIANSEN
eric@ericchristiansen.com

604-312-9999
2479 BELLEVUE AVE, WEST VANCOUVER, BC V7V 1E1

1485 CHARTWELL DRIVE
WEST VANCOUVER

MAIN FLOOR 2,870 SQ.FT.
 LOWER FLOOR 2,856 SQ.FT.
TOTAL 5,726 SQ.FT.
 STORAGE 1,560 SQ.FT.



ERIC CHRISTIANSEN
 eric@ericchristiansen.com

604-312-9999
 2479 BELLEVUE AVE, WEST VANCOUVER, BC V7V 1E1



ERIC CHRISTIANSEN
eric@ericchristiansen.com

604-312-9999
2479 BELLEVUE AVE, WEST VANCOUVER, BC V7V 1E1