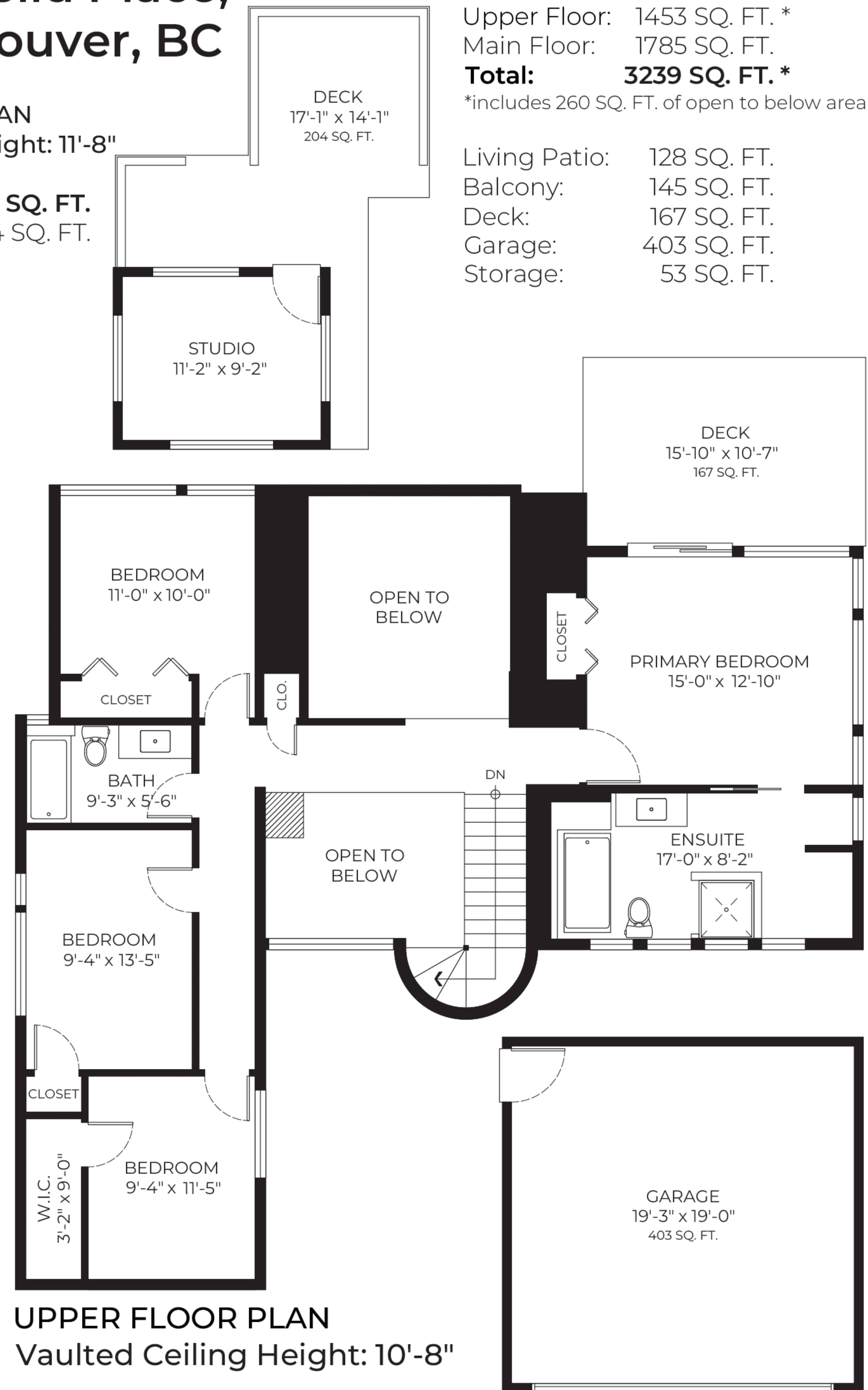
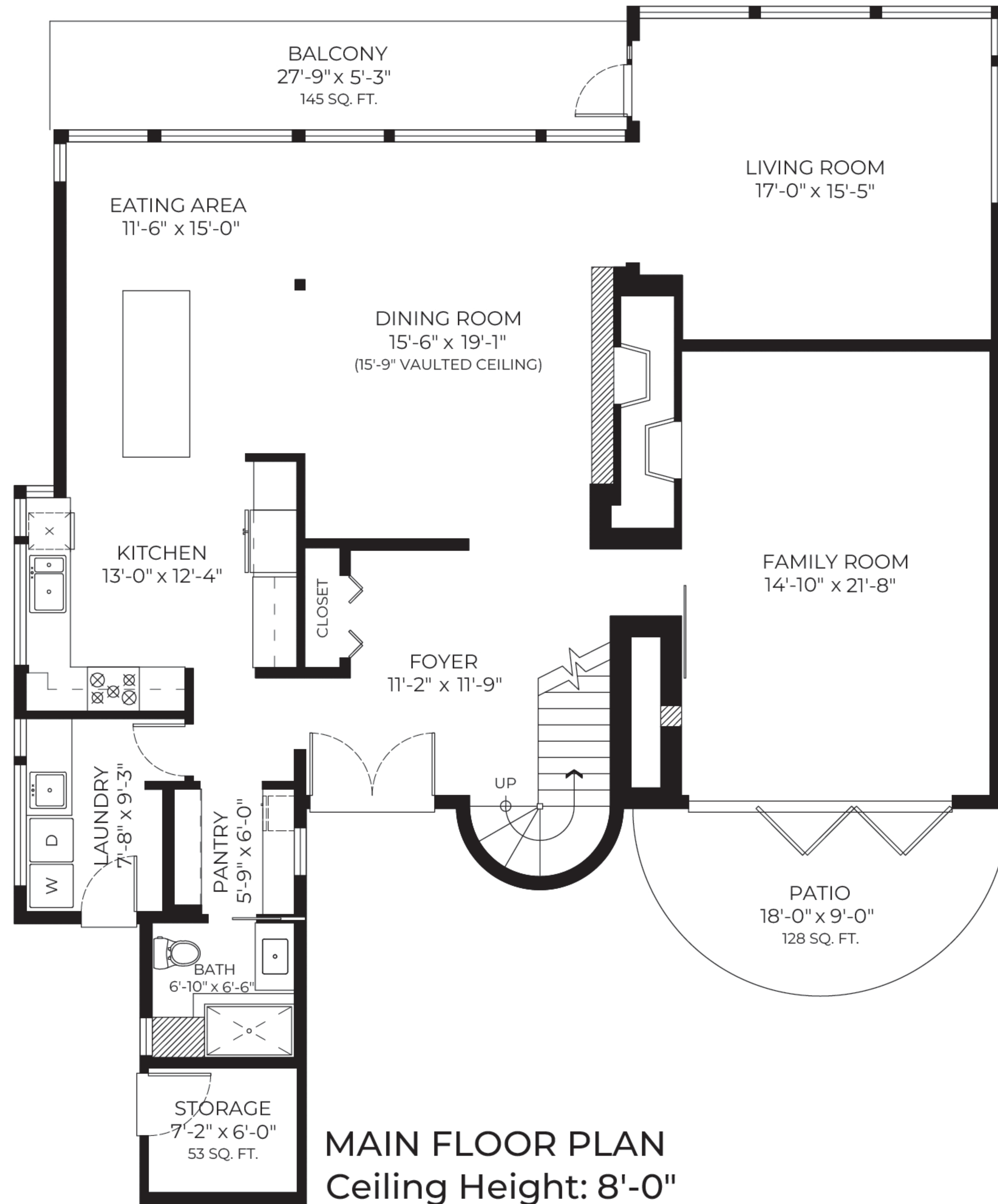


5132 Alderfeild Place, West Vancouver, BC

STUDIO FLOOR PLAN
Vaulted Ceiling Height: 11'-8"

Finished Area: 124 SQ. FT.
Studio Patio: 204 SQ. FT.



Upper Floor: 1453 SQ. FT. *
Main Floor: 1785 SQ. FT.
Total: 3239 SQ. FT. *
*includes 260 SQ. FT. of open to below area

Living Patio: 128 SQ. FT.
Balcony: 145 SQ. FT.
Deck: 167 SQ. FT.
Garage: 403 SQ. FT.
Storage: 53 SQ. FT.



*PERSONAL REAL ESTATE CORPORATION.
MEASUREMENTS ARE APPROXIMATE AND MAY NOT BE TO SCALE.
THE FLOOR PLAN ILLUSTRATION IS NOT SUITABLE
FOR CONSTRUCTION/ARCHITECTURAL PURPOSES. E&O INSURED.