

# 415 SEVENTH STREET

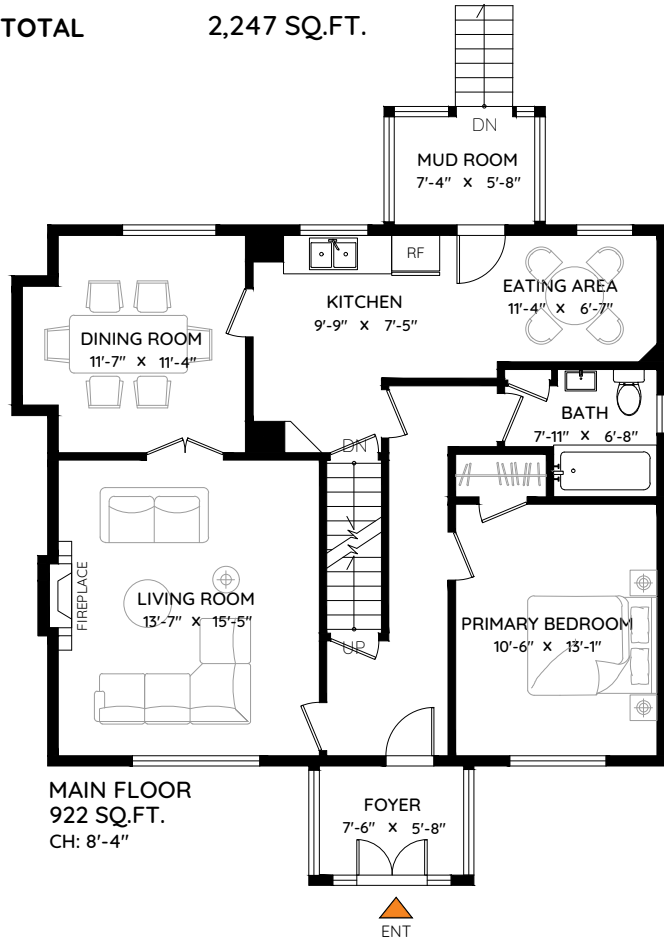
## NEW WESTMINSTER, BC



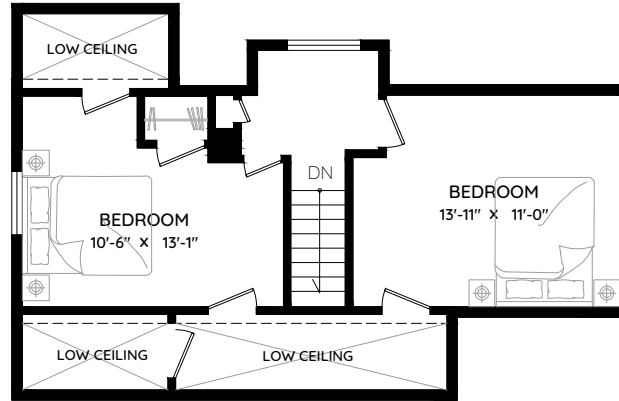
**Kris Lazaruk PREC\***

778 960 5572  
kris@krislazaruk.com

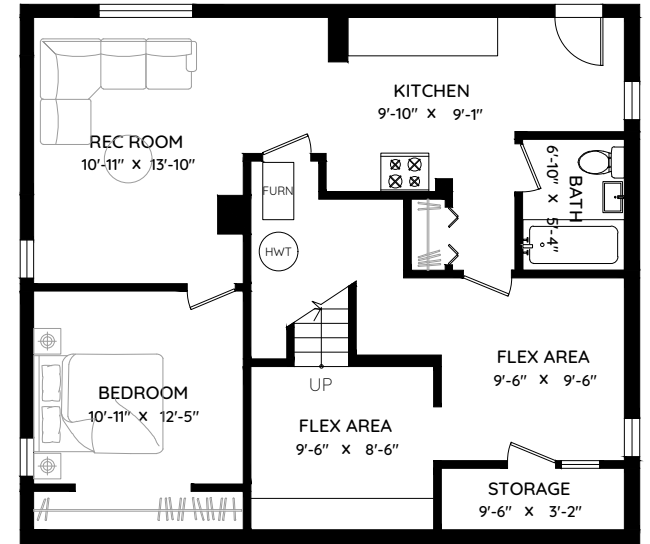
MAIN	922 SQ.FT.
UPPER	417 SQ.FT.
LOWER	908 SQ.FT.
<b>TOTAL</b>	<b>2,247 SQ.FT.</b>



**MAIN FLOOR**  
922 SQ.FT.  
CH: 8'-4"



**UPPER FLOOR**  
417 SQ.FT.  
CH: 7'-6" (VAULTED)



**LOWER FLOOR**  
908 SQ.FT.  
CH: 6'-9"



The floor plan and measurements are approximate, typically within +/- 2%. These are intended strictly for advertising purposes. They may encompass unfinished areas and are not intended for architectural or construction applications. There may be variances in the numbers if there were restrictions on property access or if taking precise measurements at the time of measuring isn't feasible. E&O insured.

